

How to Connect/Disconnect Probes

TURN OFF FIRST!



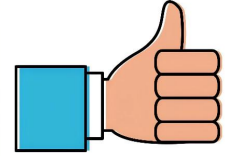
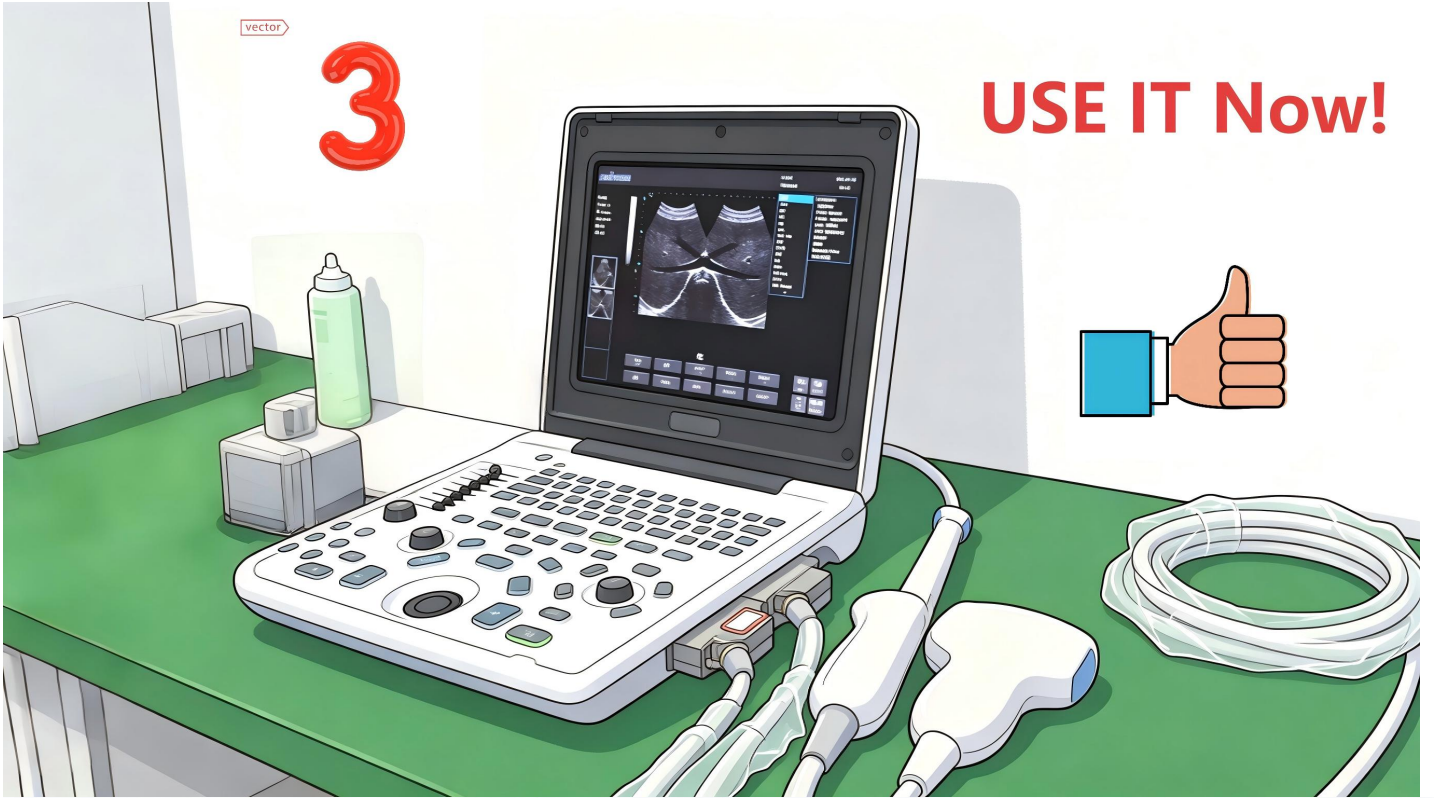
Connect/Disconnect Probes!



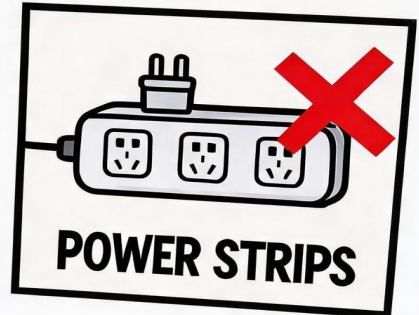
vector

3

USE IT Now!



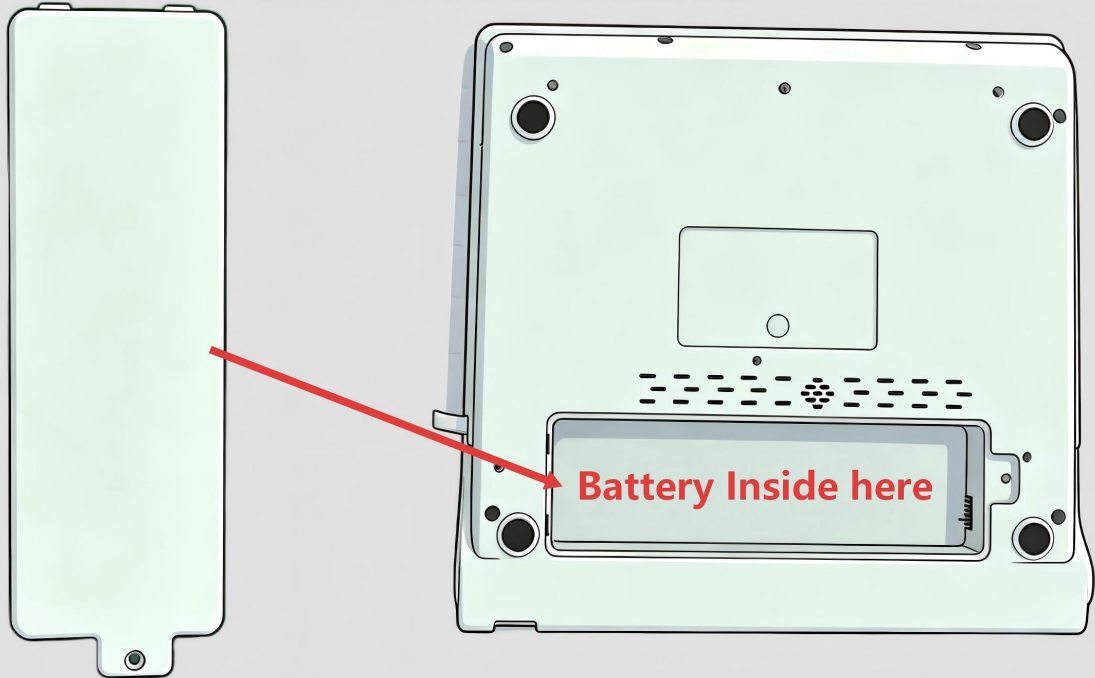
KEEP AWAY FROM ELECTRIC INTERFERENCE:



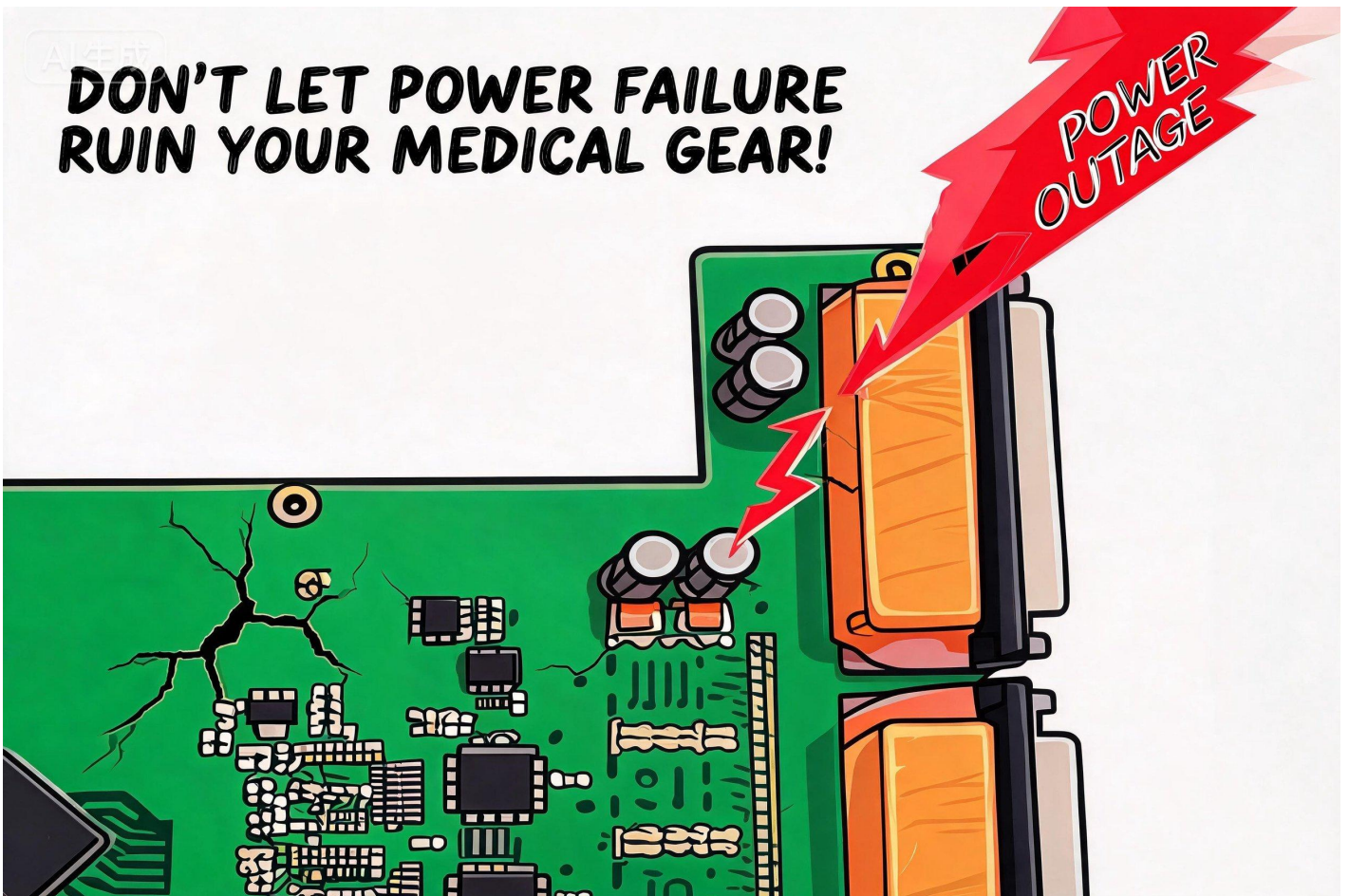
USE IN A CLEAN, INTERFERENCE-FREE AREA

Avoid POWER Outrage/Failure

IN CASE POWER OUTRAGE



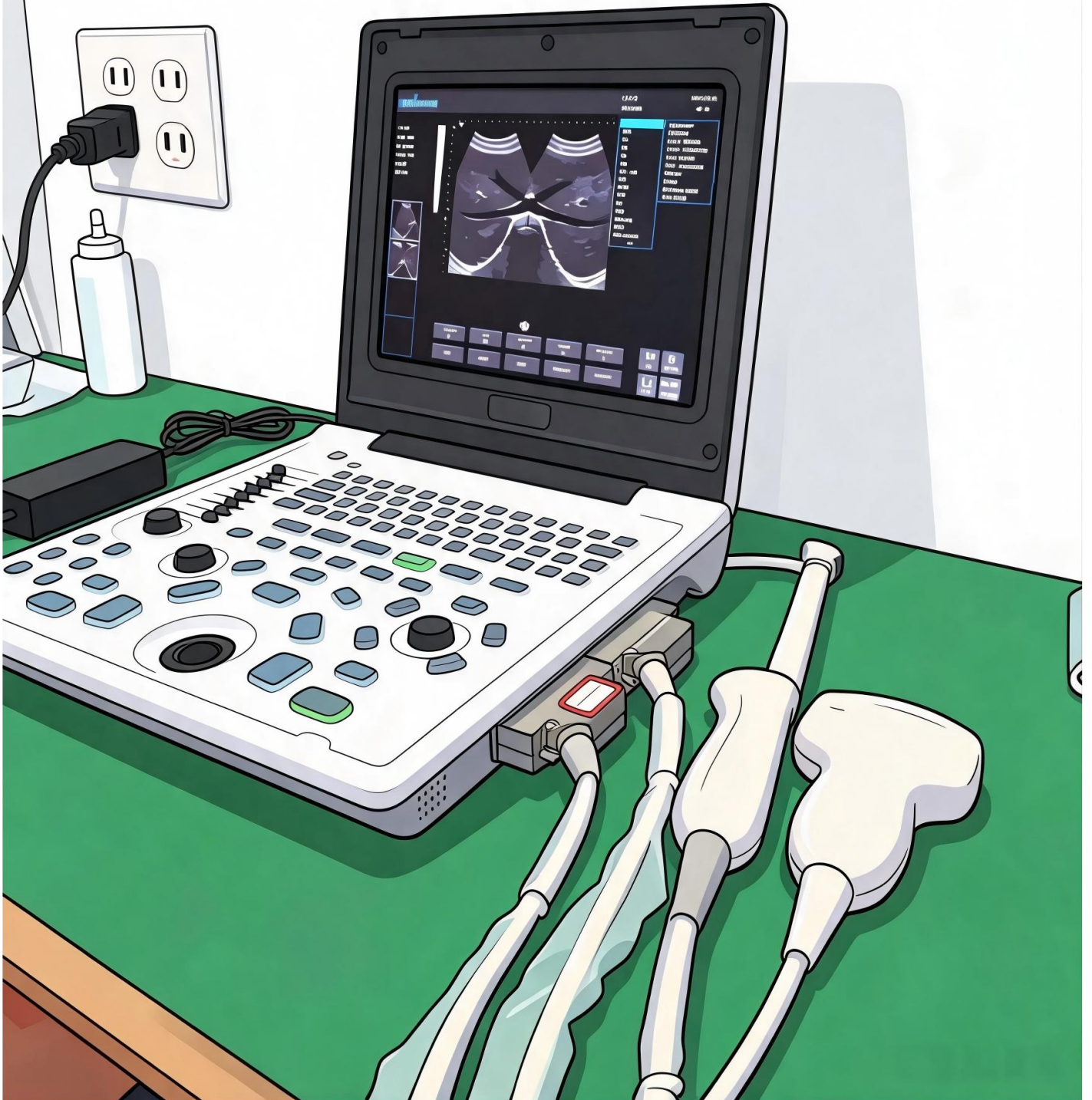
**DON'T LET POWER FAILURE
RUIN YOUR MEDICAL GEAR!**





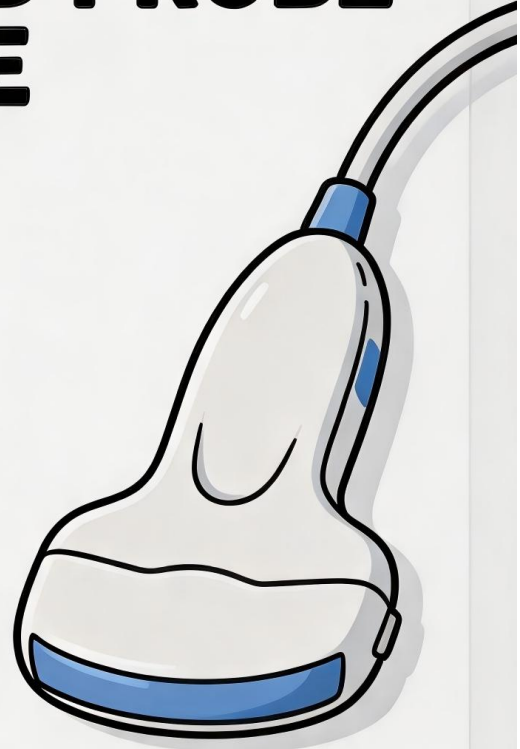
Best To

Connect Power Cord.



Probes Daily Care

ULTRASOUND PROBE CARE



✗ Never drop or strike the probe against hard surfaces.



✗ Avoid scratching the acoustic lens (blue scan surface)



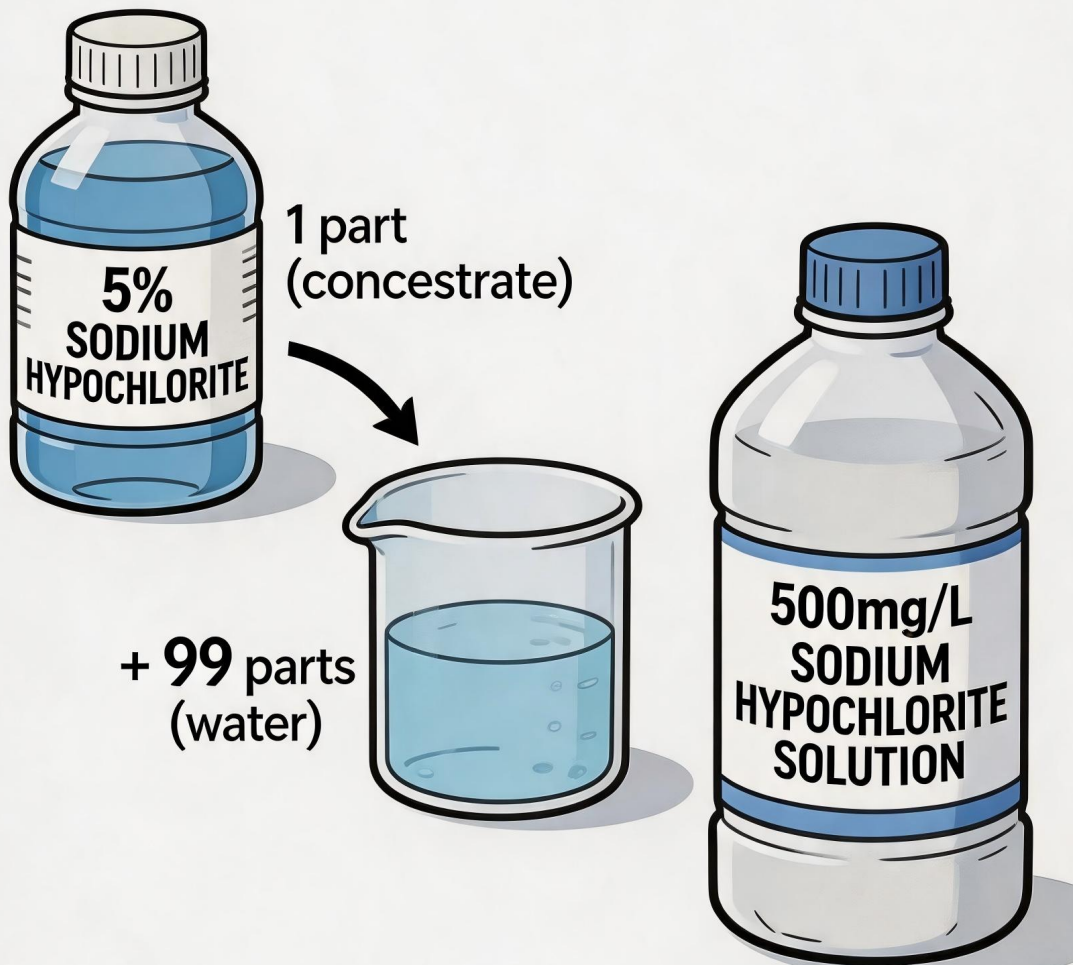
✗ Keep away from high temperature & open fire.

Probe Care and Use Guide

AI生成

STEP 1

**Dilute 5% sodium hypochlorite
1:100 → 500mg/L chlorine solution**



STEP 2

**Wipe/spray ultrasound probe with
500mg/L sodium hypochlorite solution**

Retain for 10 minutes



STEP 3

PROHIBITED SOLVENTS - DO NOT USE:



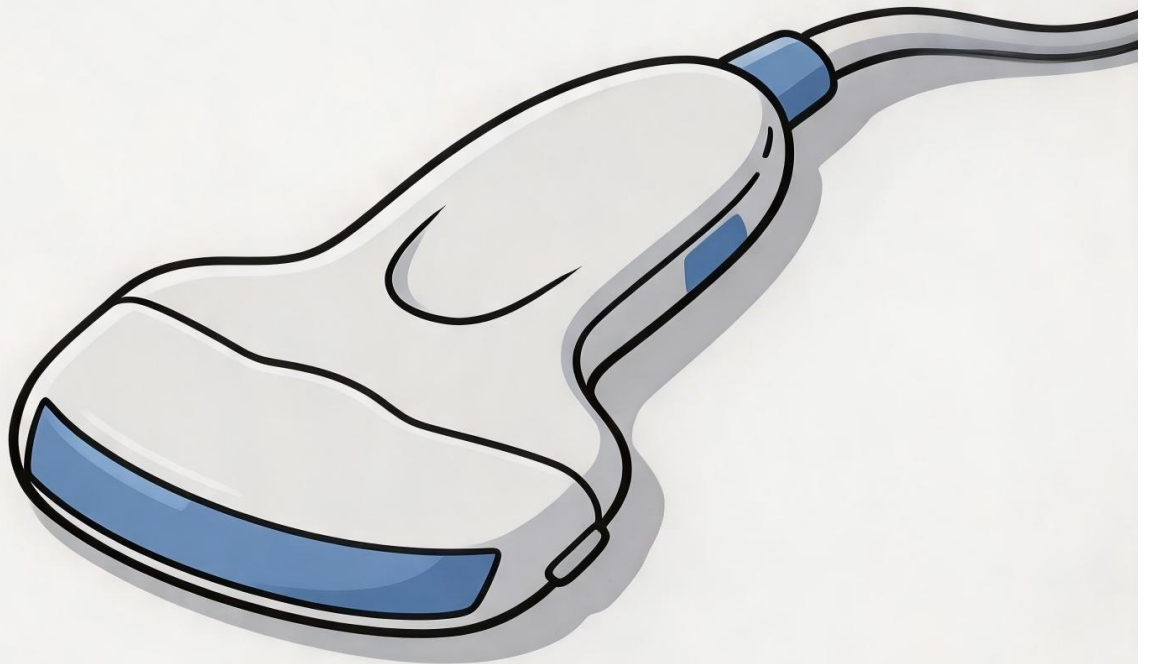
✓ No alcohol



✗ No acetone



✓ No strong chlorine



✗ No corrosive/conductive solvents

TVS Probe Use Guide

ULTRASOUND PROBE USE GUIDE

- ✓ Must use sterile probe cover & sterile gel
- ✓ Cover Complies with GB 7544-2009

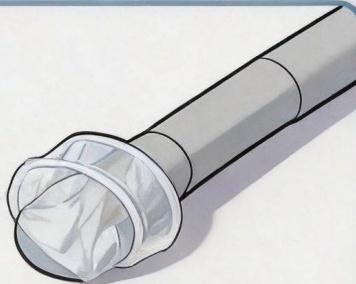
⚠ WARNING:

Never insert bare probe directly into tissue



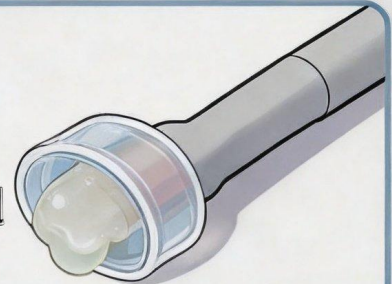
Step 1

Put 1st sterile condom cover on probe head



Step 2

Add sterile ultrasound gel



Step 3

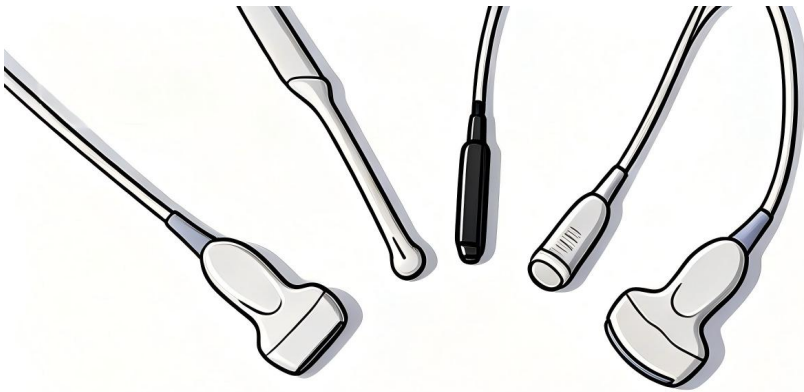
Put on 2nd sterile cover, evaaate air | No gel overflow



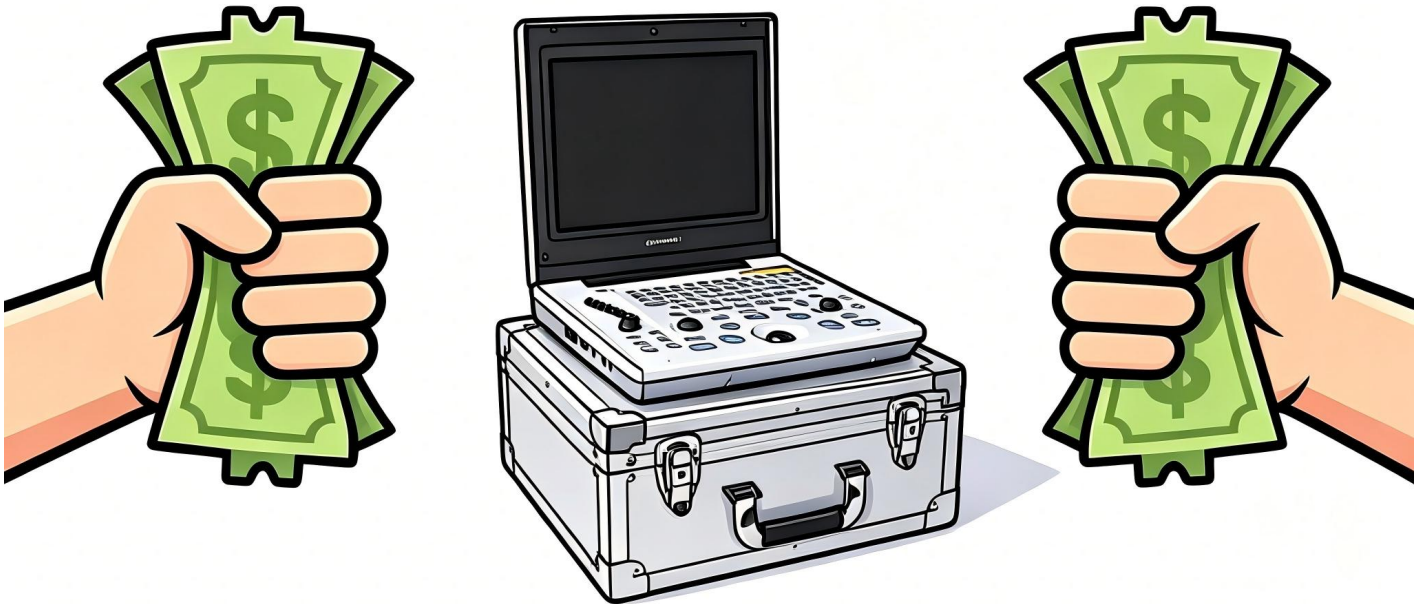
Step 4

Hold probe and insert gently





**RIGHT TOOLS =
LESS WASTE**



USE IT PROPERLY, SAVE BIG MONEY!