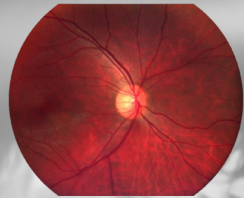


手持式眼底照相机参数如下表

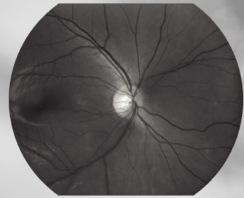
Viewing Angle 视场角	45° 45°
Picture Format 图片格式	JPEG/AVI JPEG/AVI
Minimum Pupil Diameter 最小瞳孔直径	2.5mm 2.5mm
Illumination 光源	In-frared LED/Nature LED In-frared LED/Nature LED
Refractive Compensation Range 屈光补偿范围	± 20D ± 20D
Storage 存储	Mini SD Card8G ~ 32G / Wifi Transfer Mini SD 卡 8G ~ 32G / Wifi 传输
Focus Mode 调焦方式	Manual Image Focus 手动像面调焦
Power 电源	3.7w2600mAH Rechargeable nickel metal hydride battery 3.7w2600mAH 充电镍氢电池
Resolution Ratio 图像 / 分辨率	CMOS/1920 x 1080 CMOS/1920 x 1080
Interface 接口	Mini USB Mini USB 接口
Displaying Monitor 显示	3.5" full color TFT-LCD 3.5" full color TFT-LCD
Size 尺寸	160x90x200mm 160x90x200mm
Weight 重量	440g 440g



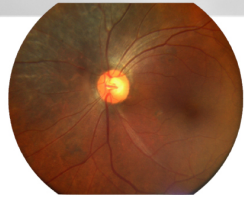
HAND-HELD FUNDUS CAMERA
手持式眼底照相机



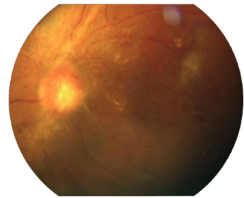
Colorful Retinal
彩色眼底照片



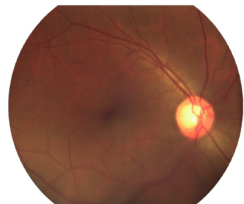
Red-Free Retinal
无赤光眼底照片



RPE
RPE变性



Diabetic Retinopathy
白内障和后期糖尿病视网膜病变



Glaucoma
青光眼

Characteristic

- Non-mydratiatic
- 45° Viewing Angle
- Wifi transmission function, the image can be easily transmitted to the computer, tablet computer or other mobile devices;

Applied to Basic fundus screening

- For small and narrow clinics;
- Screening program of Ophthalmology on mobile medical;
- For bedridden or disabled patients;
- Simple and rapid screening of children's eyes;
- ROP test for premature infants under 2.5kg;
- Real-time monitoring for Cerebral edema after brain operation;
- Monitoring all stages of diabetic retinopathy;
- Convertible to desktop with slit lamp adapter;
- Patient information management software and remote medical consultation;



特色

- 无散瞳就可进行眼底检查；
- 45° 视野广角；
- WIFI 传输图片功能，可将图像轻松传至电脑，平板电脑或其他移动设备；

应用于基本眼底筛查

- 即使是空间狭小的诊所也完全适用；
- 眼科普查项目以及移动车辆筛查项目；
- 特别适用于卧病在床的患者或院外患者以及行动不便的患者进行检查；
- 儿童眼睛的筛查简单快速；
- 适用于体重 2.5kg 以下的早产儿 ROP 检查；
- 适用于脑科疾病的早期检查和脑科手术后的脑神经水肿的实时监控；
- 有效进行糖尿病视网膜病变各个阶段的检查；
- 裂隙灯适配器能轻松完成台式机的转换；
- 患者信息管理软件及远程医疗会诊；

