

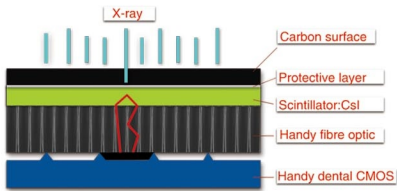




Specification		
Item	CCD500R	CCD600R
Sensor		
Chip Type	CMOS APS	
Fiber Optical Plate	Yes	
Scintillator	GoS/ Csl:Ti	
Dimension	27.5 x 38.5mm	32.3 x 44.3mm
Active Area	22.5 x 30mm	27 x 36mm
	675mm ²	972mm ²
Pixel size	18.5μm	
Image Pixel	1.9M(1600*1200)	2.7M(1920*1440)
Resolution (lp/mm)	Theoretical:27 lp/mm Measued:12-14lp/mm(GoS) 18-20lp/mm(Csl)	
Operation system	Windows2000/xp/Win7 /Win 8(32bit&64bit)	
Additional	TWAIN Driver	



APS CMOS technology:

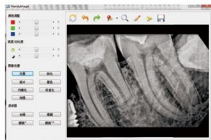
- 18.5µm pixel size
- 5T pixel type
- Theoretical resolution is 27lp/mm



- **TWAIN driver**, which works compatible with the softwares of KODAK, SIRONA, SCHICK, etc.

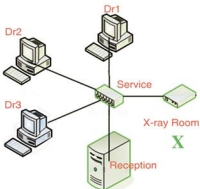
Advanced FPS with CsI:Ti technology:

- Higher sensitivity plus higher resolution
- Best image quality with lowest X-ray dose



New Handydentist software:

- Easy to use
- Powerful image processing & preprocessing
- Net version for Multi-user solution
Easily connect to PACs system under DICOM 3.0 protocol.



Multi-user solution

- <HandyDentist> net version provides the Solution to multi-user and every user may share the information in database
- Plug and play connector allows the sensor to be moved from room to room.

The Effect of image process:

- Powerful image processing algorithms make it much easier to read the image information

