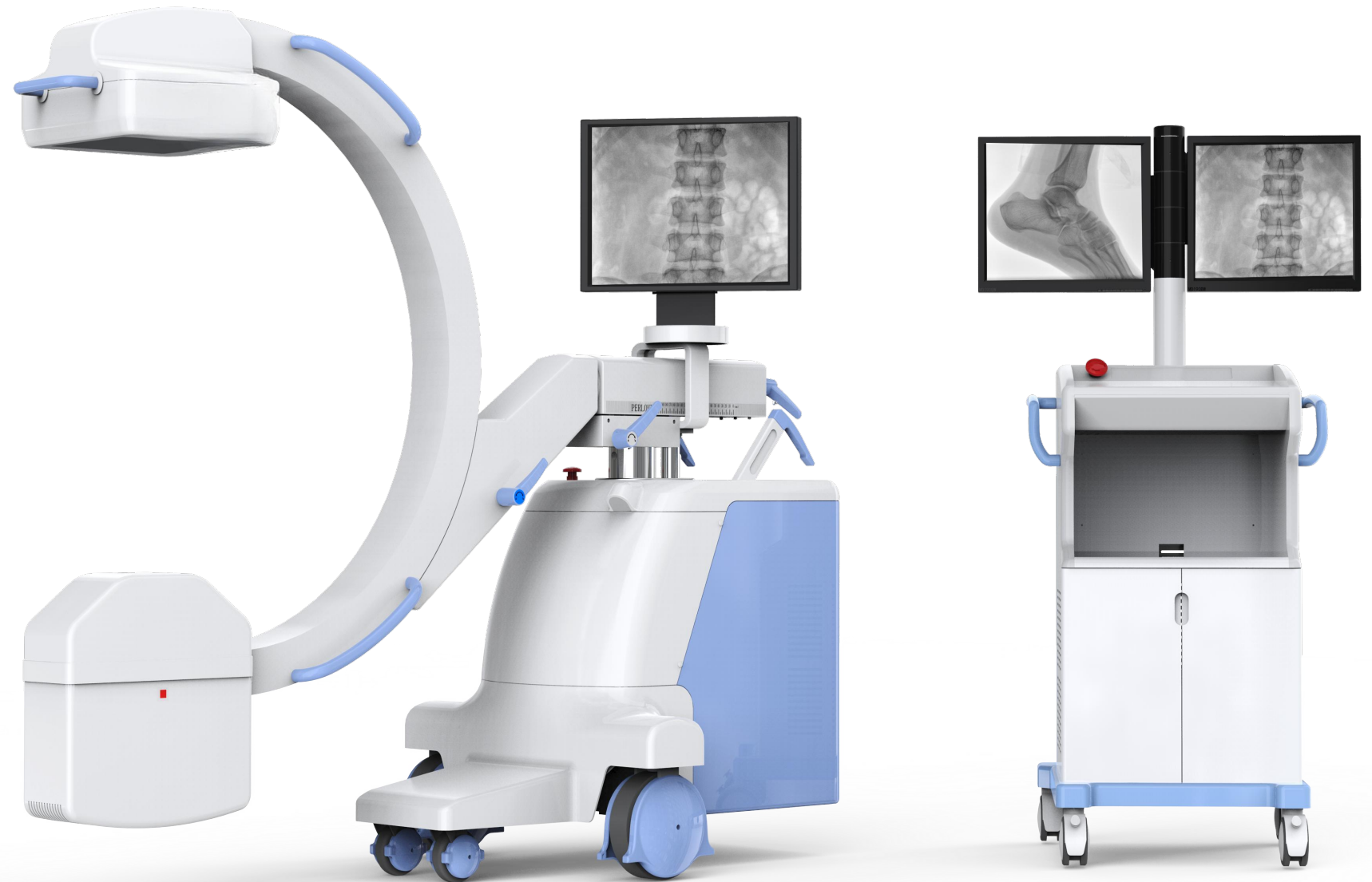


Professional smart



CCX118

Dynamic FPD C-arm System



The state-of-art dynamic flat panel detector

Larger view
Higher resolution
Lower noise

Advanced digital image technology with humanized design

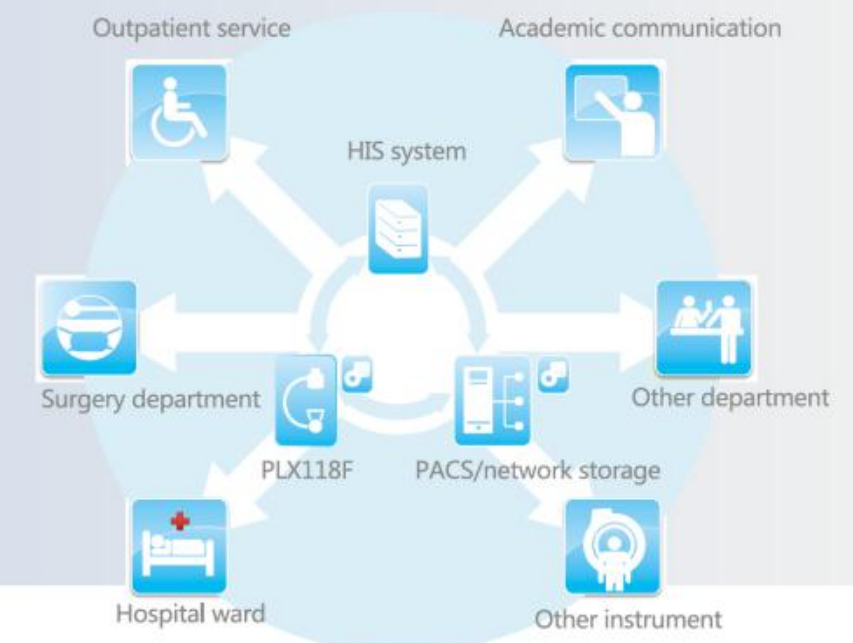
Friendly user interface

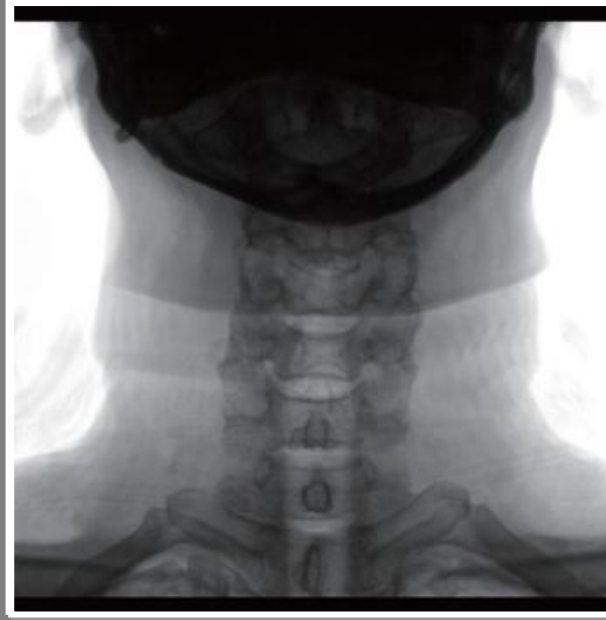
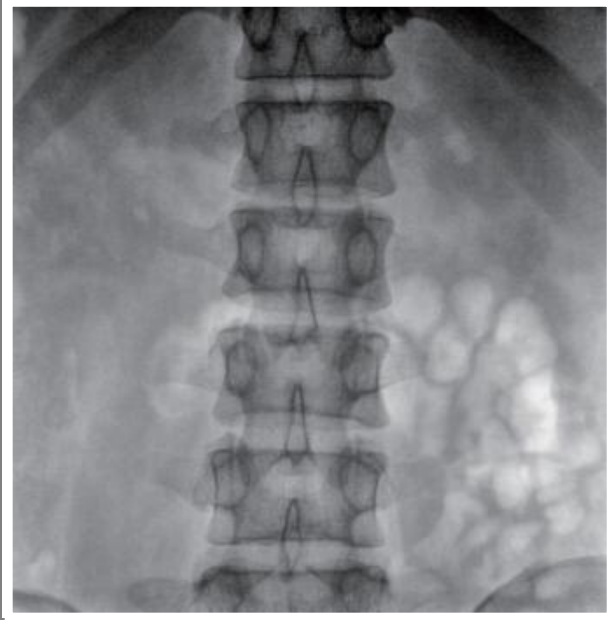
Human graphic LCD touch-screen with accurate APR parameters setting realizes convenient operation.



- Hand controller on C-arm stand controls the mechanical and collimator movement, improves your work flow even you are away from the unit.
- RCDP - rapid calculate display platform
GPU-based dynamic real-time image processing technology makes it easy to get sharp image of various body parts.

- Seamless connection with cloud PACS system for information sharing and remote diagnosing.
- Remote maintenance.
- Self-diagnosis with error-code displaying.







INTELLIGENT FREQUENCY CONVERSION PULSE PERSPECTIVE TECHNOLOGY

The high frequency and high voltage generator independently developed realizes the leading intelligent frequency conversion low-dose pulse perspective technology, greatly improves the image quality and effectively reduces the radiation dose by 50% to 80%, thus providing more safety guarantees for clinical work.



LOW-DOSE MODE

High-quality image chain, combined with intelligent frequency conversion low-dose working mode, adopts different image processing methods according to different parts of the body, different doses at different parts, different doses at different frequencies, so as to guarantee the image quality while making the surgical space radiation lower and safer.



SEPARATE THE ROOM EXPOSURE

Pulse fluoroscope has the advantage of low dose and clearer image, so it meets the needs of high precision, high difficulty minimally invasive surgery, which well protect the security of operator and patient.

- Perfect digital imaging chain makes the routine operation easily as follow:
 - ✓ Orthopedics department
 - ✓ General surgery
 - ✓ Orthopedic surgery
 - ✓ Traumatology department
 - ✓ Urinary surgery
 - ✓ Spine surgery
 - ✓ Pain surgery
 - ✓ Gastroenterology department
 - ✓ Gynecology
- DSI(Digital Spot Film)
- Red light cross localization

✓ Lumbar fluoroscopy



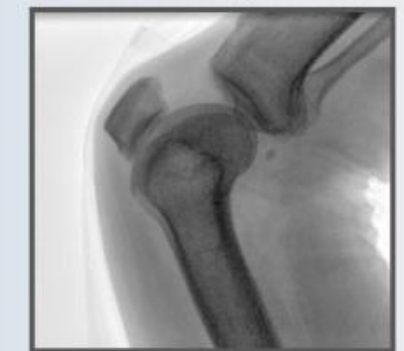
✓ Lumbar vertebrae fluoroscopy



✓ Pelvis fluoroscopy



✓ Limbs fluoroscopy



High-quality images ensure the accurate diagnosis.

Category	Items	Content
Electrical performance	High frequency inverter power supply	Power:5.0kW Main inverter frequency: 110 kHz
	Automatic fluoroscopy	tube voltage 40 kv~120kv,adjust automatically tube current : 0.3mA~~4mA adjust automatically
	Manual fluoroscopy	tube voltage 40 kv~120kv, continuous tube current : 0.3mA~~4mA continuous
	Pulse fluoroscopy	tube voltage 40 kv~120kv, continuous tube current : 0.3mA~~30mA continuous
	Photography tube voltage, mA	40KV~120KV, 25mA~100mA, 1.0mAs~280mAs
X-ray tube	X-ray tube special for high frequency	Fluoroscopy focus:0.3 / 1.5mm thermal capacity: 650kJ (867kHu)
Imaging system	Detector	Imported 9*9 inch Dynamic flat panel detector
	Monitor	19 inch IM medical LCD grayscale display *3pcs
	Mega-pixel CCU	Real-time acquisition, continuous adjustable recursion, many images storage, up and down image, left and right image, image patching, LIH (last image freeze)
	Workstation software	Image W/L adjust, grayscale conversion, interest area balance, turn, noise reduction, enhancement, smoothing, sharpening, compression, zoom, measure, mark, print layout, Dicom image sending, Dicom image print and movie playback, etc.
Structure and performance	Direction wheel and main wheel	Direction wheel can rotate in any direction, and main wheel can rotate in $\pm 90^\circ$.
	C-arm	The up and down electrical stroke of pillar is 400mm. Forward and backward movement:200mm; Revolution around horizontal axis : $\pm 180^\circ$; Revolution around vertical axis: $\pm 15^\circ$, distance from focus to screen: 1000 mm; C-arm open distance: 800mm C-arm arc depth: 660mm; Slipping on orbit : 135°