

HIGH FREQUENCY ANALOG MOBILE X-RAY MACHINE

CCX101



PRESENTATION OF PRODUCT

PRODUCT DESCRIPTION

Product Usage

CCX101 is a high frequency mobile X-ray radiography system, suitable for radiology department, orthopedics, ward, emergency room, operating room, ICU and other departments. With flexible movement, easy operation, high efficiency, to meet the radiography for all of human body's parts, such as head, limbs, chest, spine, lumbar vertebrae, abdomen, etc.

Product Specification

1. Generator output: 5.0 kW
 2. kV range: 40 kV - 120 kV in 1kv steps
 3. mA range: 25~100 mA
 4. Exposure time: 4 films per min, less than 20 ms per film
 5. X-ray tube: Stationary anode tube with a focal spot of 1.5*1.5 mm
 6. Collimator: Bright field light beam collimator with 120 W halogen lamp and auto shut-off facility.
 7. Power requirements: Single phase 220 V +/- 10% Voltage tolerance; 50 Hz power supply
 8. Mobile stand: Light-weight, low height mobile and easily maneuverable stand.
 9. The mobile radiography unit also include a handhold control and a microwave wireless remote control for the 20-meter microwave remote Without the restriction of Barriers and directional ,different from the infrared remote control . Grids reduce the fog line filters and raise the degree of scattering contrast.
 10. The unit is provided with a line (power) cord of acceptable durability, quality, length and is secured with adequate strain reliefs
- The unit include, power plugs that are sufficient for the maximum voltage and current of the unit.
11. The maximum distance from the ground: $\geq 2000\text{mm}$, and minimum distance from the ground: $\leq 500\text{mm}$. Rotating around the horizontal axis 180° , rotation around the vertical: $\pm 90^\circ$, the collimator can rotate 180° , column can rotate $\pm 90^\circ$.

Product Advantages

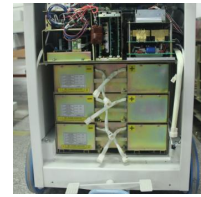
1. Monoblock

- ★ High frequency and High voltage monoblock, 15 years experience, make sure the stability quality.
- ★ 50kHz High inverter frequency, good x-ray quality, low dose, world top-level technology.
- ★ Thermal capacity 500KJ, long time continuous exposing.
- ★ With digital closed loop control technology and fault alarm function



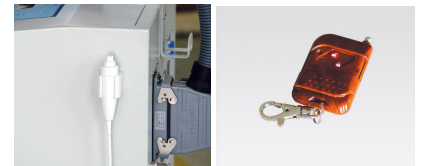
2. Built-in Battery

- ★ Powerfully battery inside, once fully charged, it can take about 200 images.
- ★ Machine can use either AC or DC



3. Exposure Controller

- ★ Hand controller -- wired exposure
- ★ Microwave controller -- wireless remote, within 20 meters

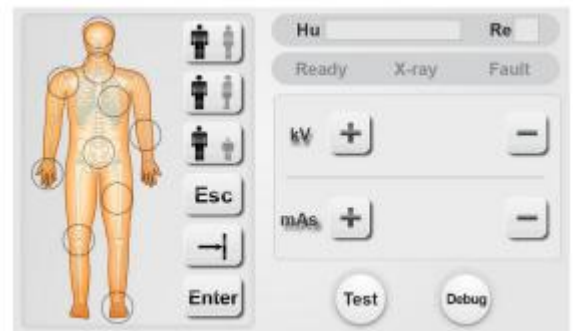


4. Self Balance Function

- ★ The support arm can stop at any position, that's our self balance technology, easy operation.

5. LCD Touch screen

Human body graphic for parameter, Body shape, Adult, Children, positioning etc. Easy to operate.



5. Optional Items for working together to meet various requirements of positioning and update in future with simple workflow

★ Upright bucky stand L-100

Ascending and Descending Range: 560-1625mm
Film Size: 5"×7" - 17"×17"
With Imported Korean JPI Grid
Grid Size: 5"×7" - 18"×18"
Grid Ratio: 10:1
Grid Density: 103L/inch
Focal Distance: 150cm



★ Mobile radiography table PLXF152

2000mm(L)*700mm(W)
Height: 500mm
Cassette moving : 1150mm
Wheel can be rotated in 360°
Each wheels brakes to fixed easily



★ **Able to Upgraded to Direct digital examinations in future.**

1) Digital Amorphous Silicon CSI WIFI connected Wireless Flat Panel Detector. Fast acquisition, direct display, sharp image

2) Digital Workstation integrated into a portable Laptop, which can help realize real time exams and diagnosis.



6. High Quality Clinical Images

