

Version 1.0 Year 2022





Industry Leader, Trusted by Customers



Work hard for
nearly 20 years



General radiology equipment
one-stop supplier



Mobile products have led the
domestic market share for more
than 10 consecutive years



Nearly 40,000 square
meters of production
and office area

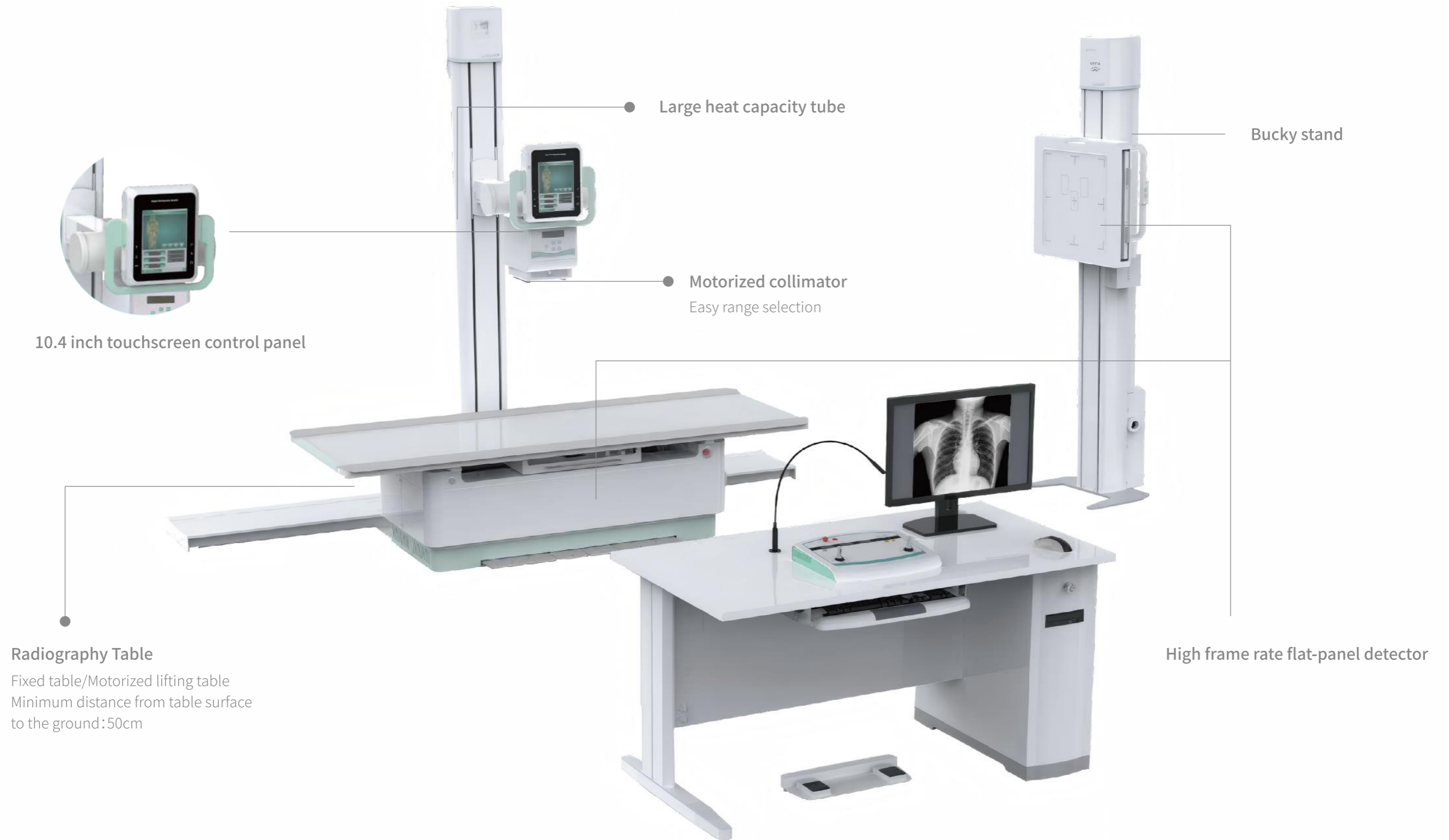


Medical X-ray National
Standard Designated Unit

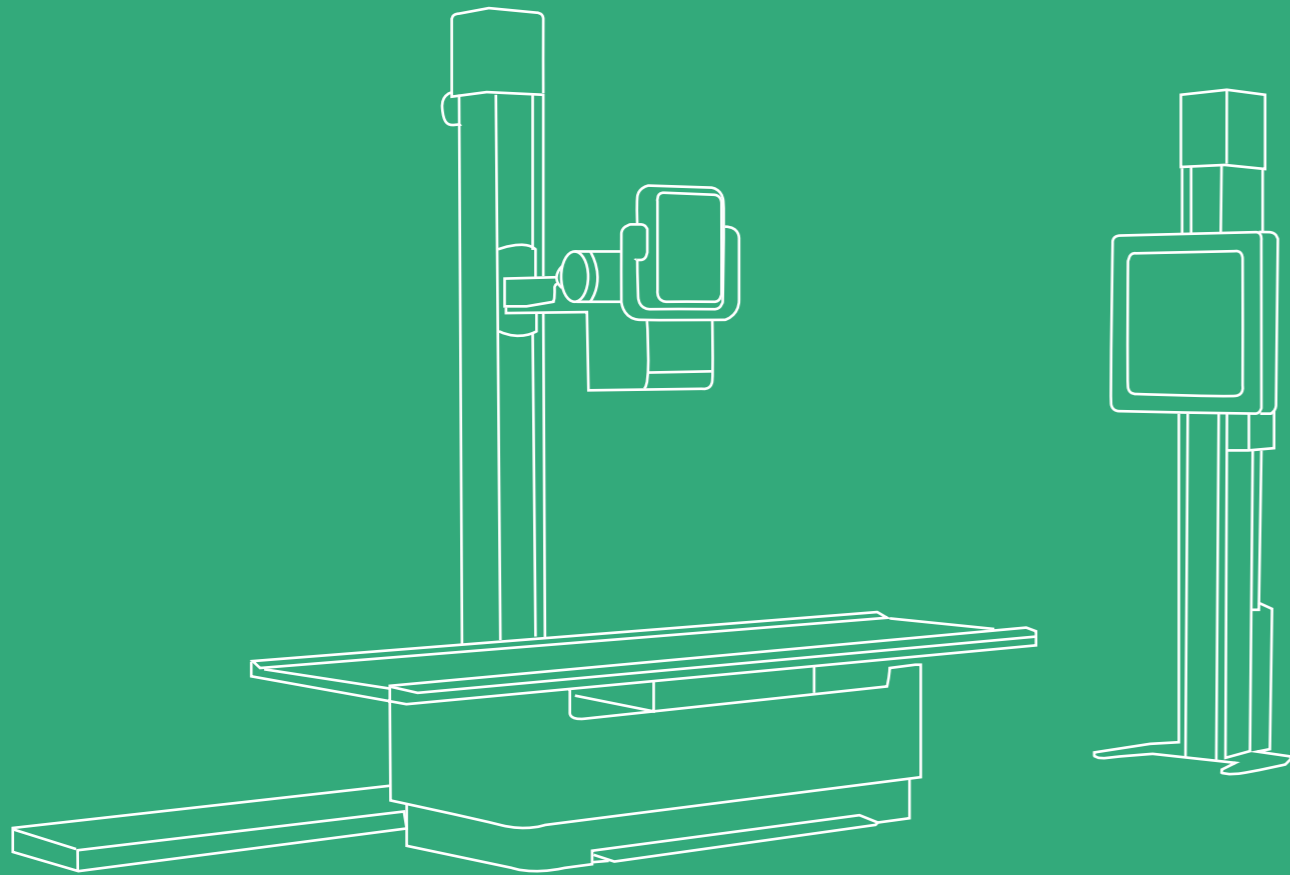


Sold to more than 100
countries and regions
around the world

Multiple configuration Customized examination



TECH CONTRIBUTES HEALTH



Why choose Digital Motion X-ray?

What is digital motion X-ray FPD?

Multifunctional

- Capable of digital radiography, digital fluoroscopy and digital angiography.

Dynamic

- A technique for analyzing dynamic changes based on the transmittance of X-rays.
- Enables clinicians to observe the dynamic motion of anatomical structures over time, enhancing diagnostic capabilities.

Advantages compared with static X-ray

- Digital motion X-ray use leading edge technology in making detailed and real time images than static images.
- Evaluate the patients' condition or recovery effectively by observing the dynamic changes of organ function.



One for all

Clinical Applications



Radiography Center



Pulmonary



Health Examination Center



Glimaging



Orthopedics and Trauma



Gynecology

Outstanding radiography & fluoroscopy performance



Digital radiography

General radiography, high kV radiography, oblique position radiography.



Digital fluoroscopy

Chest and abdominal fluoroscopy, foreign body localization and removal.



Digital angiography

Esophagogram, intravenous pyelography, T-tube cholangiogram, salpingography.



Digital spot imaging (DSI)

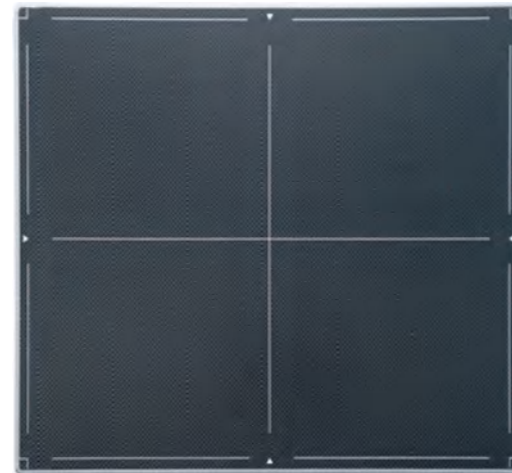
Spot imaging in milliseconds, high definition image acquisition to accurately target the lesions.



Flexible and efficiency Versatile table movement

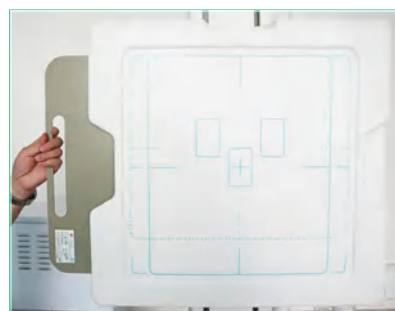
high frame rate dynamic flat panel detector

- more details and more accuracy
- 18 million pixel radiography
- 30 fps dynamic image acquisition
- 17" x 17" large FOV, avoid multiple exposures to reduce radiation
- Optional FPD makes the process highly efficient



Anti-scatter grid

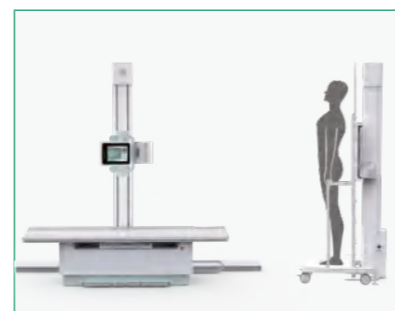
- Each FPD equipped with removable grid
- 1m and 1.8m standard SID



Removable grid for bucky stand

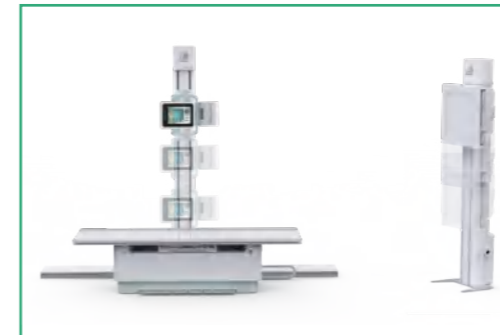


Removable grid for table



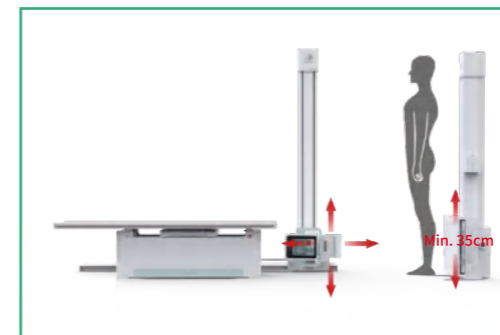
Vertical radiography stand (optional)

Versatile table movement



Automatic tracking function

The tube can be automatically back to center-position conveniently and quickly when the chest radiograph frame is placed.



Low profile radiography

35cm minimal distance between X-ray tube and the floor, allowing low profile radiography covered by wide range tube movement.



Diverse radiography position

Large angle rotatable X-ray tube enables a variety of radiography position, e.g. cervical AP view, odontoid view, submentovertical projection.



Wheelchair and stretcher radiography

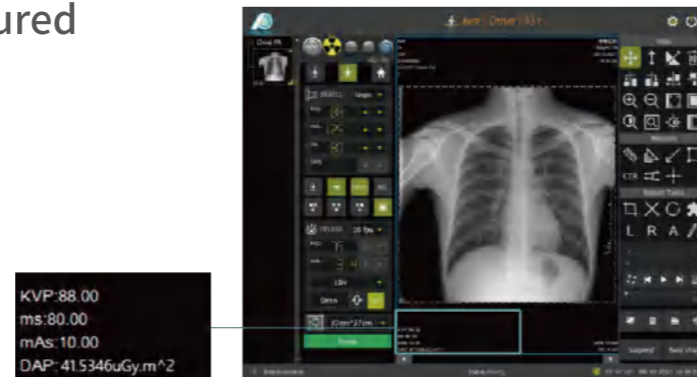
The tube and column can rotate 180°, providing convenience for stretcher and wheelchair patients to avoiding secondary injury.

Green environmental protection

Accurate and efficient

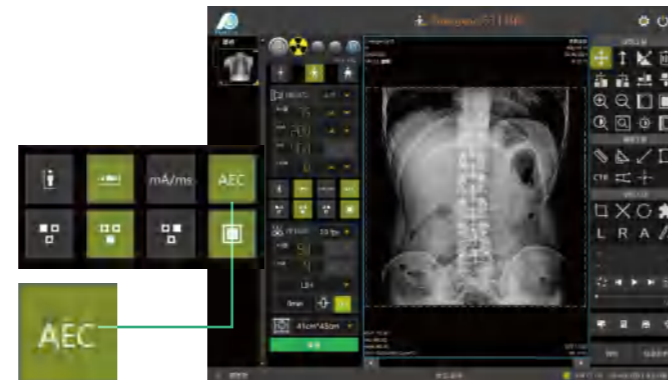
DAP - Dose visualized, safety assured

- The pioneer usher in intelligent radiation dose monitoring system.
- Synchronous dose monitoring system, guaranteeing more accurate diagnosis.



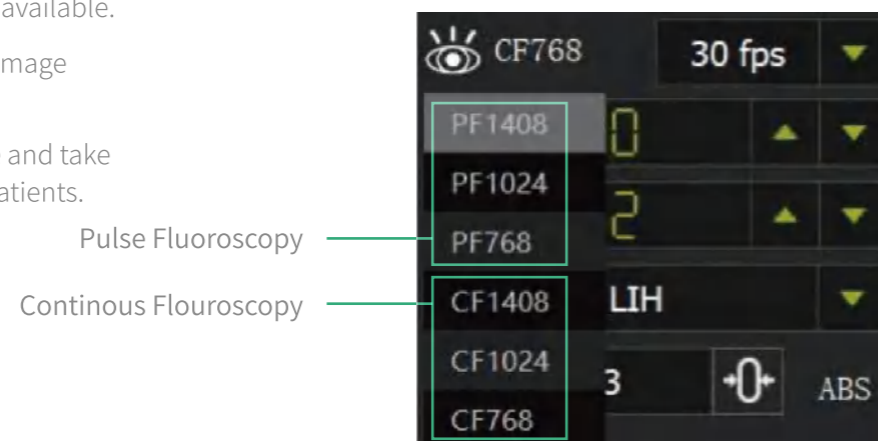
Ionization chamber AEC system

- Automatically control mAs in a more efficient way.
- Automatically adjust the brightness through different body part.
- Simplify operation and improve overall efficiency.



Pulse Fluoroscopy, get clear images at low doses

- A variety of perspective modes are available.
- Extremely fast exposure, reducing image noise and improving sharpness.
- Significantly reduce radiation dose and take care of the health of doctors and patients.



Feature enhancements

Ultimate experience

Cardiothoracic ratio measurement

- Cardiothoracic ratio is a common indicator for evaluating cardiac enlargement, and is mostly used for diagnosis of exclusion or follow-up evaluation of patients. (For example, if the cardiothoracic ratio is found to be enlarged during the examination, further examination can be carried out in combination with the medical history and symptoms to confirm the diagnosis)



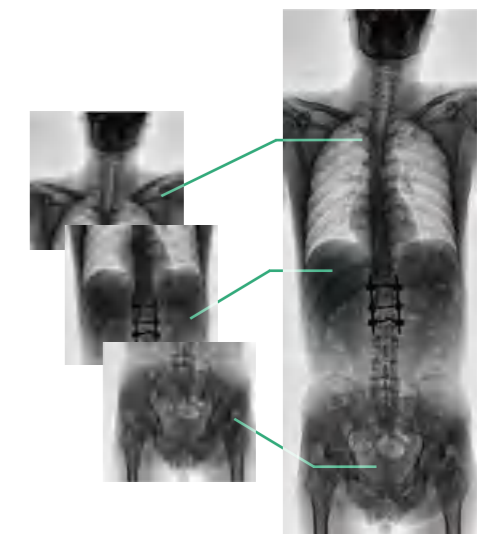
Spine measurement

- Spinal measurement can visually display the overall anatomical shape and scoliosis position of the spine, judge the balance and flexibility of the spine, and have certain value in the diagnosis, preoperative evaluation, and postoperative judgment of scoliosis.



Automatic stitching function - accurate and precise(Optional)

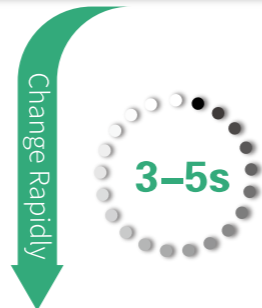
- Panoramic images of full spine, full lower limbs.
- Accurate measurements of preoperative planning and postoperative surgery.
- One-step radiography, providing more reliable diagnostic basis for clinical practice.



Cloud Image Interconnection

Pre-view Various Examine Modes

- The system brings convenience to staff by multiple intelligence control modes, simple and fast control interface and efficient image collection will accelerate the speed and improve accuracy of clinical radiography.
- Meet the different requirements of outpatient, emergency, physical examination on different cases.

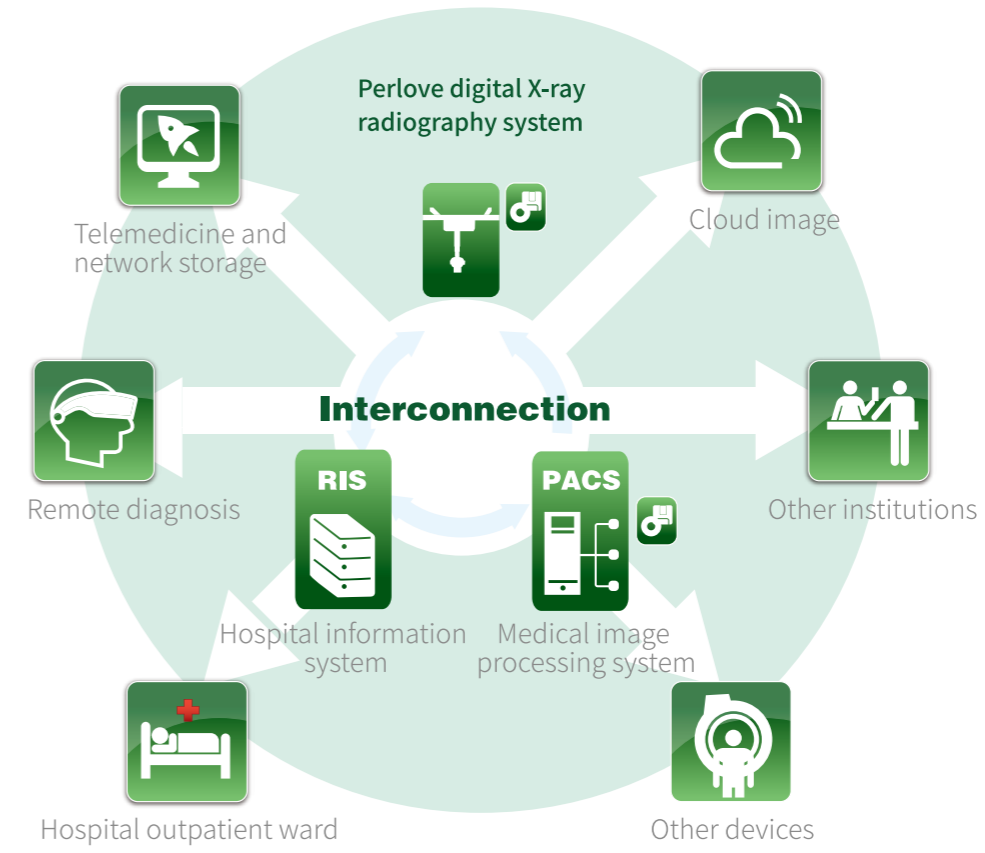


Fast Image Acquisition

- High standard software system, faster image acquisition, improved workflow continuity and overall inspection quality. 3-5 seconds speed conversion, 1-2 seconds faster than similar DR, offering faster examine experience for clinic.
- Fast automatic image processing.
- Automatic image output.



Certifications- CE, ISO Approved



- The system can be maintained remotely, it can perform fault self-diagnosis and display fault codes, quickly and accurately determine the fault status and has self-protection functions.
- It can share information with PACS system, bring benefits for remote diagnosis.

HIGH FREQUENCY DIGITAL MOTION X-RAY MACHINE

C260313002

(Dual functional, 50KW, 630mA, Dynamic FPD, 4-Way Floating table, AEC*1 set, DAP*1 set ,



PRESENTATION OF PRODUCT

PRODUCT DESCRIPTION

Product Usage

It is a dual functional machine integrated digital radiography and digital fluoroscopy into one machine. It can work in radiology department where in Medical Center, Diagnostic Center, Health Examination Center, Orthopedics and Trauma for doing radiography and fluoroscopy exams like ,Chest, limbs abdomen,lumbar etc whole body part radiography and fluoroscopy like esophagography, pyelography, salpingography , chest fluoroscopy, abdomen fluoroscopy etc.

1.Digital radiography :

Head, chest, lumbar, abdomen,limbs in each clinical departments .

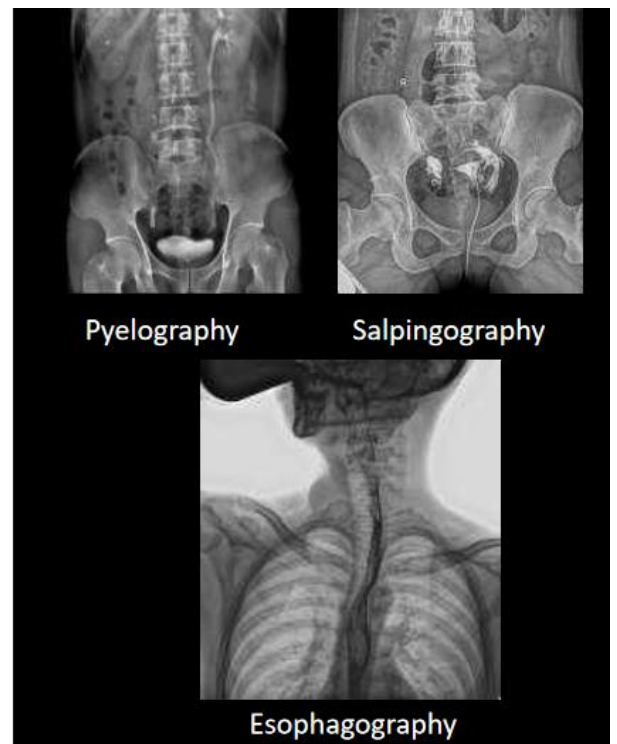


2.Digital fluoroscopy :

Suitable for various parts of the body
(such as chest X-ray, abdominal X-ray, etc.)

3. Digital angiography :

- Such as esophagography, pyelography, salpingography
- Interventional operations under fluoroscopy Foreign body removal under fluoroscopy, puncture under fluoroscopy, bone restoration under fluoroscopy, etc.



◆ **Precise Radiography :**

visual inspection, find lesions, and accurately locate point films.

◆ **Multi-dimensional Radiography:**

Oblique photography to meet the shooting needs of special parts of the human body.

◆ **Special Radiography:**

meets the shooting needs of standard chest radiographs or pneumoconiosis identification.

◆ **Spine Stitching Radiography :**

whole spine and lower extremities



Product Specification

1. Item	2. Content	3. Technical Parameters
Power condition	Voltage	380V±38V
	Frequency	50Hz±1Hz
	Capacity	≥85kVA
	Internal Resistance	≤0.17Ω
HF HV Generator System	Power	50KW
	Inverter Frequency	500 KHz±20%
	Tube voltage	40kV—150kV
	Tube current	10mA—630mA
	mAs	0.1mAs—630mAs
	Fluoroscopy tube voltage	40kV—125kV
	Fluoroscopy tube current	0.5mA~20mA (continuous) 5mA~40mA (pulse)
Touch screen Table-side control	10.4 inch	Image display , SID stretching range, exposure parameters, x-beam size, head rotation angle, body type, and emergency examination

X ray tube	Tube Focus:big/small	1.2mm /0.6mm
	Input power	Big focus: 74kW/Small focus 30kW
	Anode thermal capacity	220kJ/300KHU
	X-ray tube heat capacity	900kJ/1300KHU
	Rotary anode speed	8400rpm
Digital Flat Penal Detector (Dynamic)	Active area	427mm(H)×427mm(V)
	Pixel matrix	3072(H)×3072(V)
	Pixel pitch	139 μm
	Limiting resolution	Min. 3.7 line pair/mm
	A / D transition	16 bit
	Energy range	40 - 150 kVp
	Acquisition speed	30fp/s
X-ray table	Light touch switch,electromagnetic brake	
	Height	550mm
	Load capacity	200kg
	Filter(Grid)	Focusing distance: 100cm, Grid density: 230L/INCH,
	Movement	electromagnetic brake 4-way floating
Mechanical movement	X-ray tube up-down	1300mm
	X-ray tube rotating	-90°~90°
	Pillar longitudinal movement	1500mm
	Pillar rotating	-180°~180°
	Table longitudinal moving	1000mm
	Table Transverse moving	260mm
Digital Workstation	19inch monitor +computer +keyboard +mouse +speaker	
	Joystick remote controller	
	Foot brake control system	
	Desk	
	Image professing software	

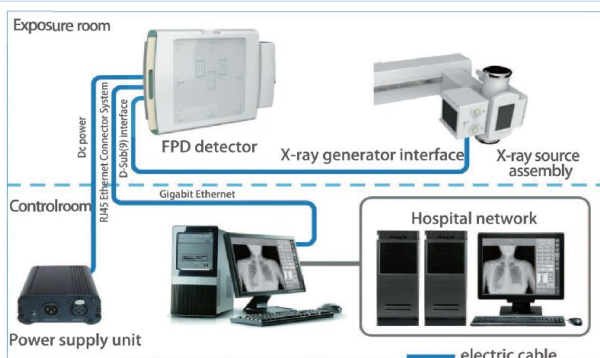


Image processing software functions introduction :

1. Basic operations and image acquisitions

Registration: regular registration, emergency registration, adding agreement, adding items, clearing information, starting inspection:
Work list: list information, search for patients to be examined, refresh of the to-be-examined list, deletion of examinations, and display column settings. Start inspection, emergency registration;
Exam list: list information, examined patient display and search, delete images, image storage, CD burning, add items, display column settings, modify examination information:
Patient size: thin adults, adults, fat adults;
Photography parameter settings: exposure mode, frame rate setting, kVp, mA, ms, mAs , AEC, focus selection;
Perspective parameter setting: exposure mode, frame rate setting, kVp, mA, ABS, time reset;
Browsing Tools: Zoom, Flip Horizontal, Flip Vertical, Rotate Left 90 Degrees, Rotate Right 90 Degrees, Zoom In, Zoom Out, Original Size, Move Image, Invert Color, Adaptive Size, ROI Magnifier, Magnifier, Default Window Width Window Level, ROI window width and window level, visible window width and window level, point gray value, advanced processing, ellipse gray measurement:
Measurement tools: arrow, cardiothoracic ratio (CTR), distance measurement, angle measurement, spine measurement;
System Tools: Text Marker, Anterior Body Marker, Left Marker, Right Marker, Circular Crop, Delete Image, Delete Tool:
Error reset, exposure indicator, full screen, save current image, print

Image processing software functions introduction :

2. Image output and management operations:

Report editing: patient information display and editing, image selection, report content template selection, report description, report conclusion, report description + conclusion, editing knowledge base, reporting doctor, reviewing doctor, reporting time, printing template, setting, saving report:
Report Printing: Quick Print, Print Report Image Archive, Burn, Print: Delete Image, Image Storage, Browse Image, Report, Lock/Unlock, Store Queue, Print Queue;
Disc Burn: Volume Label, Save Settings, File Compression, File Structure :
Print: Access to DICOM Printer, Local Printer
System Settings: System, Annotation Information, Tools, Others;
Hardware Configuration: Syncbox, High Voltage, Probe, Collimator, DAP; **Network Configuration:** Local, Job List, Netstore, Local Store, Print:
Check Management: basic information, placement information, hardware parameters, image processing, inspection protocol:
Quality management: search, system management:
User management: add, update, delete, authority.

Intelligent Control---People-oriented and Great Care

Flexible and efficient multi-dimensional movement
Full satisfaction in varieties of positions.

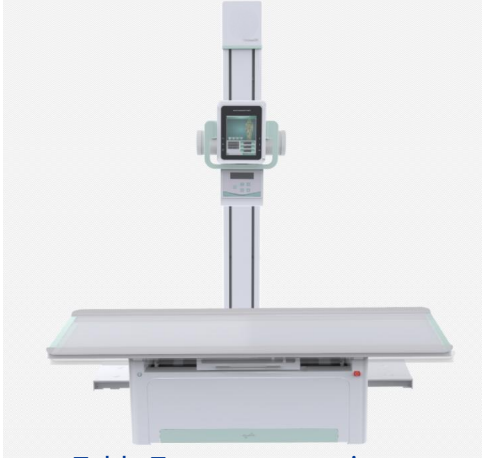


Table Transverse moving

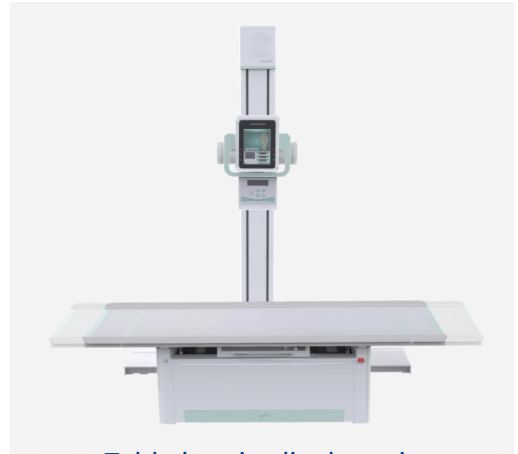
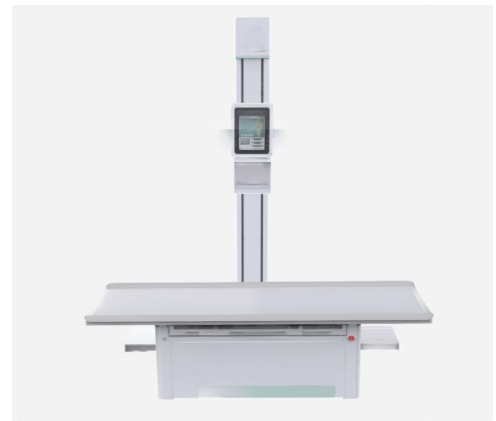


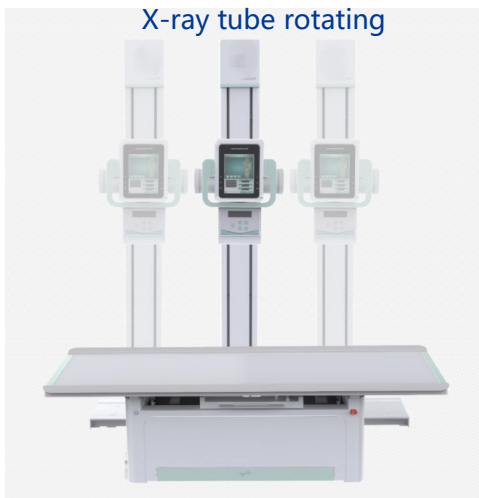
Table longitudinal moving



X-ray tube rotating



Film device longitudinal moving



Pillar longitudinal movement



X-ray tube up-down movement

Product Advantages

Cost-Effective :

- Digital motion X-ray = 1 Digital x-ray + 1 Digital fluoroscopy machine
- Suitable for those medical hospitals, centers, clinics who want to provide various X-ray checking services but with limited space and budget.
- All Hospitals, centers, clinics who have demands of digital X-ray checking are highly suggested to own a , Its digital fluoroscopy working mode will enrich your medical services and bring extra business.

Reliable & High Efficiency:

- Powerful generator to ensure quality X-ray source and low dose, world top-level technology
- X-Ray tube with high rotation and heat capacity guarantee long time working
- Full Digital workflow, high tech imaging processing software, real time display and sharing.

Clinically-Oriented :

- Max SID 1.8m meet chest radiography, preferred for COVID-19 diagnosis;
- High-frequency generator to ensure X-Rays' hardness and stability
- Large Size Dynamic flat panel, detector 17*17 inch, Large view of acquisition, reduce repeat exposure.
- Maximum height of Tube stand moving, lowest to 55cm to the ground, flexibly meet positioning demands

Customer-Oriented :

- Optimized and efficient multifunctional design, easier to operate and Save more space;
- Table-side touch screen, synchronized with workstation, conveniently real time display Image.
- Motor-driven collimator, more accurate and convenient to do fluoroscopy /angiography exams.

Value-Added:

- Standard Manual Whole Spine Stitching
- Standard 1 set AEC function
- Standard DAP function
- Standard High-density filter grid, more effective filtering of scattered rays, to ensure the quality of the image



(1) Table-side Touchable Control System

New added touchable table-side screen system come with multifunctional functions:

- Synchronized with the workstation, radiographer can create a new exams anywhere both in X-ray room and control room, which is more convenient for the doctor's daily exams and emergency, no need repeat settings .
- Pre-view images after exposure,
- Real time display SID stretching,
- Setting exposure parameters.
- Human graphic body part selection of exposure
- Adjust Collimator- effective area
- Digital display movement : tube head rotation angle
- 3D model Positioning demonstration
- Gravity Sensor Automatic Rotate
- Emergency exams access: automatic record for take radiography firstly then do patients registration when urgent diagnosis required.



(2) Sync Tracking between Tube and flat panel Detector

Latest automatic tracking (Tube & detector)

The X-ray irradiation range can be automatically adjusted according to the inspection site, and the detector of bucky stand and the tube can be synchronized during upright examination, which is different from the traditional electric beam limiter tube and the chest X-ray frame. work efficiency.

Manual operation of simultaneous movement of tube and chest rack

To ensure that when the automatic tracking system fails, the tube and detector of bucky stand can still be tracked synchronously to ensure the normal progress of daily inspections.

