



DIGITAL RADIOGRAPHY MACHINE

(50KW, 630mA,17*17inch FPD, Floor-Mounted, 4-way floating table)

PLD5600A



1. Company info	2/10
2. Application	3/10
3. Movement machine	4/10
4. Product Specification	5/10
5. Digital Working Station with software	6/10
6. Advantages	7/10-8/10

BROCHURE

Company introduction

Perlove Medical

Founded in 1993  Nanjing, China

- **Mission:** Tech contributes health
- **Vision:** Striving for medical tech innovation
- **Core Value:** Responsibility, Communication&Learning



Number of Employees: 1000(approx)



R&D Center 4 professional lab and production area: 70,000 m²



Management & Sales & HR & office building



Yearly Output Capacity ≥ 10,000 sets

Perlove Medical is the first echelon China indigenous manufacturer of medical imaging equipment founded since 1993, Integrated R&D, manufacturing, marketing, sales, after-sales, headquartered in Nanjing (Eastern of China) with sub-factory in Zhuhai and complete sales & service network at home and abroad. Perlove is always pursue of her mission-"Tech contributes health"and expectation "Perlove-world of love".

- Top 1 Chinese X-ray supplier to the world
- China Top 1 C-arm Manufacturer
- Qualified Medical Supplier of UN
- China National Strategic Materials Reserves Enterprise

Production Base



Nanjing heardquarter



Production Base For :

Mobile DR , C-arm System, 3D C-arm , Surgical Navigation Robot , 3D Dental



Zhuhai Sub-factory



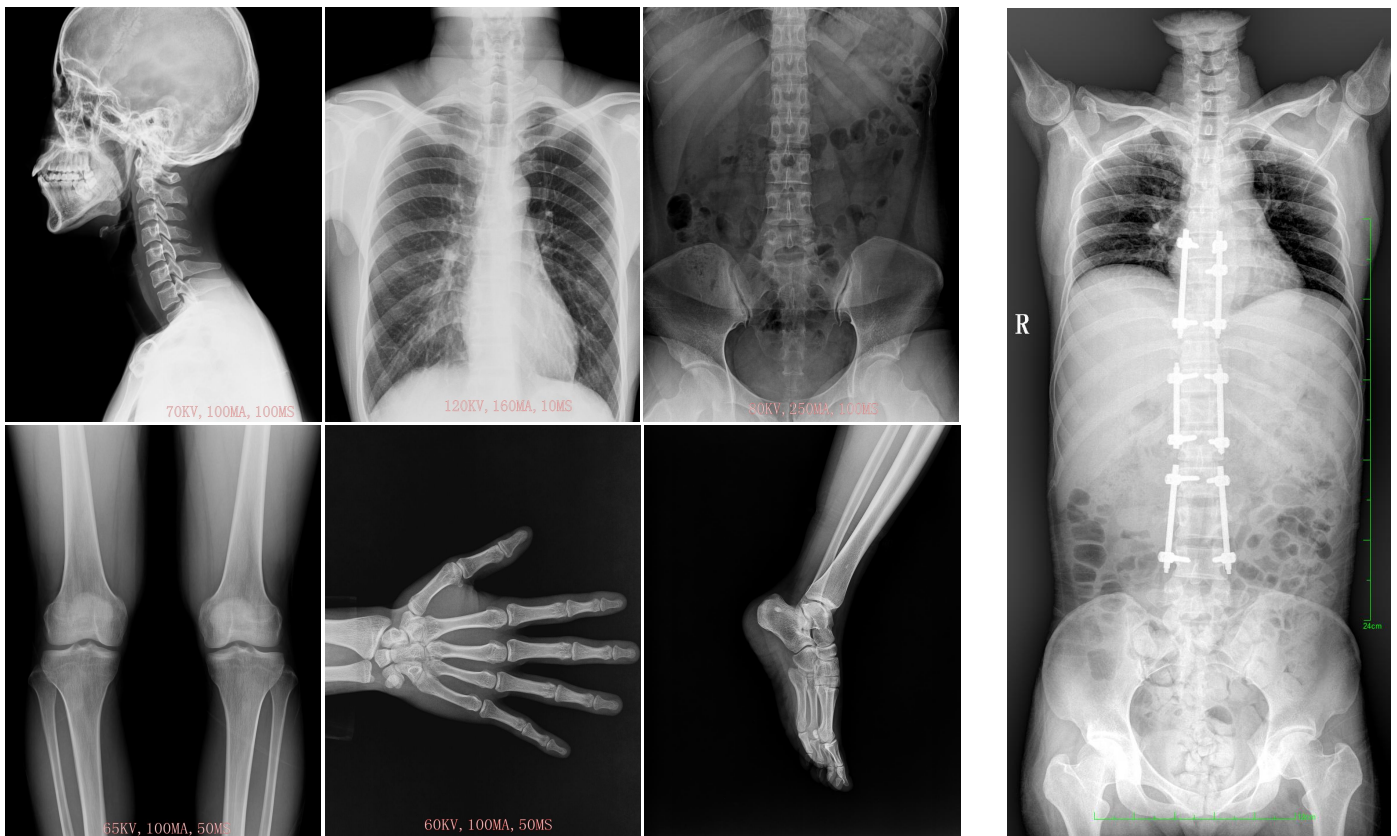
Production Base For :

Stationary DR, All-in-One Digital Fluoroscopy, Vet DR, Mammography

PRODUCT DESCRIPTION

1: Application:

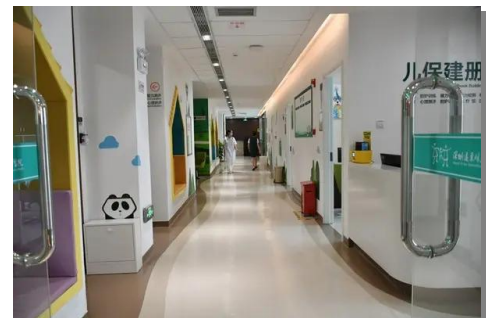
It is suitable for radiology department, orthopedics, ward, emergency room, operating room, ICU and other departments. With flexible movement, easy operation, high efficiency, to meet the radiography for all of human body's parts, such as head, limbs, chest, spine, lumbar vertebrae, abdomen, etc.



Radiography dep.



Fever clinic



Children's Dep.



Operating room.



Ward/ICU



Diagnostic /Medical center

2. Movement of machine



Table and tube Movement: – 4-way floating table

Table-side Digital touch screen control system:	
Display for protocol selection, data correction and image review	
Longitudinal travel of tubel column:	1300mm
Longitudinal travel of table top:	1000mm
Transverse travel of table top:	260mm
Table dimensions: (L*W)	2250 x 810 mm
Tube column rotation	-180° ~ +180°
Tube head rotation	-90° ~ +90°
Maximum load capacity of the table	200 kg
Grid	18inch*18inch, 103LP, 10:1, focal length:1.0m
Bucky stand	
Range of the detector mechanism Center:	1500 mm
Grid	18inch*18inch, 103LP, 10:1, focal length:1.8m

3: Product Specification

1. Item	2. Content	3. Technical Parameters
Power	Voltage	380V±38V
	Frequency	50Hz±10Hz
	Electrical Power	Three phase
High Frequency High Voltage Generator	Output Power	50KW
	Inverter Frequency	500KHz
	Tube voltage	40kV - 150kV, 1 kv step
	Tube current mAs	10mA - 630mA 0.1-630mAs
Collimator	Illumination brightness	>=200Lux
	Filiter	>=1mmAL
X ray tube	Model:	XQG50
	Tube Focus:big/small	1.2mm /0.6mm
	Input power	Big focus 74kW Small focus 30kW
	Target surface	12°
	Anode thermal capacity	300KHU (rotating anode)
	Anode Heat dissipation:	750W
	Tube Capacity:	1300KHU
	Filter	0.9mm AL/75KV
	Rotary anode speed:	8400rpm
	Work voltage:	40-150KV
Flat Penal Detector	Materials	A-Si(Amorphous Silicon)- CSI
	Active area	430(H)×430(V)mm
	Pixel matrix	3072(H)×3072(V)
	Pixel pitch	139µm
	Spatial resolution	3.7LP/mm
	A/D	16bit

4. Digital Working Station with software:

★ **Registration:** Auto registration, be equipped with Dicom Worklist SCU. To simplify the input process for doctors, greatly reduce the amount of labour and greatly improve the working efficiency

★ **Image Acquisition:** Automatic window adjustment, Automatic cropping, Automatic transmit.

★ **Image Processing:** Tissue equilibrium, W/L adjustment, Gamma correction, interest district, reversed phase, noise reduction, smooth, sharpen, pseudo color, edge extraction, shadow compensation, filter nuclear, single window, dual-window, four windows, movement, right rotated 90°, left rotated 90°, level mirror image, vertical mirror image, magnifying glass, image zooming, reset, layer information, label character, drawing label, length measurement, angle measurement, rectangular length, rectangular area, elliptic length, elliptic area. Algorithms for image optimization according to different physiological structures and parts of the body

★ **Image output:** Dicom 3.0 format: Transmit, Image Storage, Image viewing, Image printing.

Transmit-Compatible to connect to the PACS, HIS, RIS system

Printing-Compatible to Film printer to print out image for diagnosis

Report-Paper report interface for output with reference at most 3 images for comments.

Storage-USB /DVD driver copy out images.

★ **Help:** Click this button , you will find a manual for guiding you use the workstation.

Tips: Workstation is equipped with 19" imported LCD high resolution medical monitor screen, the delicate and richness degree of image is far higher than the normal medical monitor.

★ Brightness and Contrast of monitor up to 1000NIT, better than the normal LCD screen of 400 NIT.

★ Be equipped with the microphone and remote exposure control outside the X-ray room.

★ Be equipped with various set of infrared facilities to protect the machine from any miss-operations.

★ Overloading system with error code alarming self-protection design

★ Number of predefined anatomical programs; More than 200,000

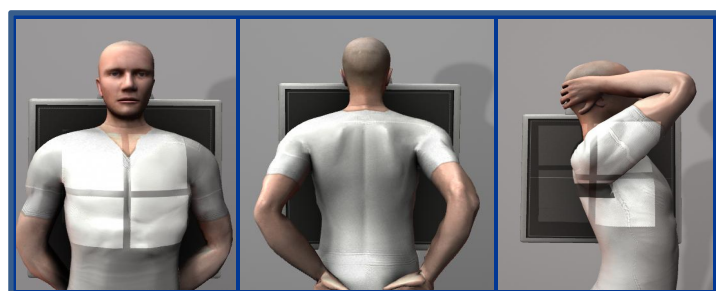
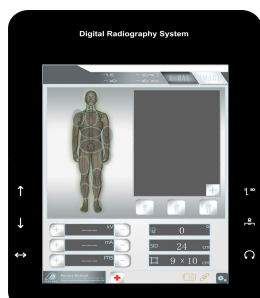
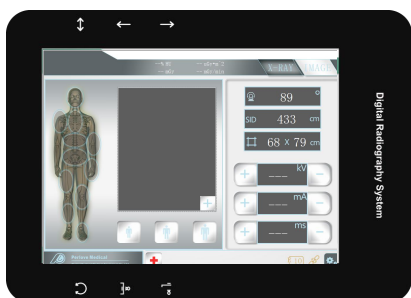


5. Advantages

(1) Table-side Touchable Control System

New added touchable table-side screen system come with multifunctional functions:

- Synchronized with the workstation, radiographer can create a new exams anywhere both in X-ray room and control room, which is more convenient for the doctor's daily exams and emergency, no need repeat settings .
- Pre-view images after exposure,
- Real time display SID stretching,
- Setting exposure parameters.
- Human graphic body part selection of exposure
- Adjust Collimator- effective area
- Digital display movement : tube head rotation angle
- 3D model Positioning demonstration
- Gravity Sensor Automatic Rotate
- Emergency exams access: automatic record for take radiography firstly then do patients registration when urgent diagnosis required.



(2) Flexible movement

- Tube up and down.
- Detector of Bucky stand up and down.
- Table 4-way floating
- Longitudinal moving of spherical column
- Tube rotates around the column
- Tube Swing around axis

(3) Removable 2 sets of grids

There are 2 set (1 m and 1.8 m) high-density wire grids are standard, removable design, no need to use wire grids when shooting children or low-dose parts, which can effectively reduce radiation damage to doctors and patients.





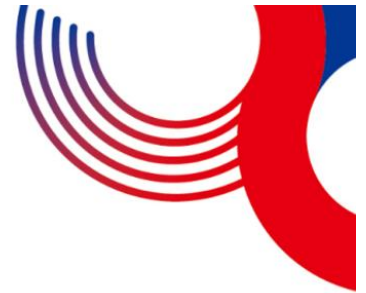


**PERLOVE
MEDICAL**



PERLOVE MEDICAL

Nanjing **Perlove** Medical Equipment Co., Ltd.



Belle Duan

Regional Manager



+86-17625907525
025-68571666-9561



Belle-057@perlove.com.cn



<http://www.perlove.com.cn>



NO.97, Wangxi Road,
Jiangning District, Nanjing



211122 (P.C.)

Surgical Robot



3D C-arm



C-arm for intervention



FPD C-arm



Mobile DR



Dynamic DR



**One-stop Supplier
of X-ray Equipment and Surgery Robot**

Dental CBCT



DRF



Gastrointestinal DR



Ceiling-mounted DR



Double column DR



Vehicle DR

